

ANNUAL
REPORT

July 2022 - June 2023

MSU

Safe Place

Contents

| | |
|---|----------------|
| Letter from the Director..... | page 3 |
| Mission Statement..... | page 4 |
| Honoring History..... | page 5 |
| Reorganization..... | page 6 |
| Program Updates | page 7 |
| Volunteering..... | page 8 |
| Services Provided..... | page 10 |
| Advocacy..... | page 11 |
| Counseling..... | page 13 |
| Shelter..... | page 15 |
| Support Provided..... | page 17 |
| Addressing Family and Legal Needs..... | page 19 |
| Outreach..... | page 20 |
| Impact..... | page 21 |
| Community Presence..... | page 22 |
| Financial Support..... | page 24 |
| Collaboration..... | page 25 |
| Future Growth and Development..... | page 26 |

Letter from the Director



Dear Spartan Campus, Community Partners, and Friends,

This has been a year of change for the MSU Safe Place program! In the spring of 2022, MSU Safe Place joined with ten other campus units at Michigan State University to form a new division, University Health and Wellbeing (UHW). Dr. Alexis Travis, Assistant Provost and Executive Director of Health and Wellbeing, joined MSU to oversee all of these programs in the fall of 2022.

In June 2023, as part of the University Health and Wellbeing reorganization, MSU Safe Place joined with Center for Survivors in providing supportive services to survivors of interpersonal violence. This expansion will streamline access to resources for those who experience relationship violence, stalking, sexual assault and sexual misconduct. The MSU Community is fortunate to have high quality, comprehensive programming on campus to provide support to survivors.

Joining the Center for Survivors will not change the nature of services that MSU Safe Place provides. In addition, I'd like to reassure donors that donations will continue to be utilized to support MSU Safe Place to meet the needs of those experiencing relationship violence and stalking.

I am excited to begin a new academic year at Michigan State University, and I'm grateful that I work with an awesome team! We continue to provide a wide range of services to survivors, educational opportunities for interns and volunteers, and campus and community collaborations and training to improve systemic responses to relationship violence and stalking. On behalf of the MSU Safe Place staff and the clients we serve, thank you to colleagues, members of our local communities, grant funders, alumni, and past clients for all of your support!

With gratitude,
Holly Rosen, LMSW
MSU Safe Place Director
(she, her, hers)

Mission

The primary purpose of MSU Safe Place is to ensure the personal safety, welfare, and dignity of those who experience relationship violence and stalking within the MSU and greater Lansing communities. Goals include:

Providing temporary and safe shelter, advocacy, support and referrals for MSU students, staff, faculty, or their partners, as well as greater Lansing community members, including the minor children of those who are victimized

Increasing community awareness about relationship violence and stalking to improve prevention efforts and community responsiveness.

Offering a learning environment for members of the community through volunteer and internship opportunities.

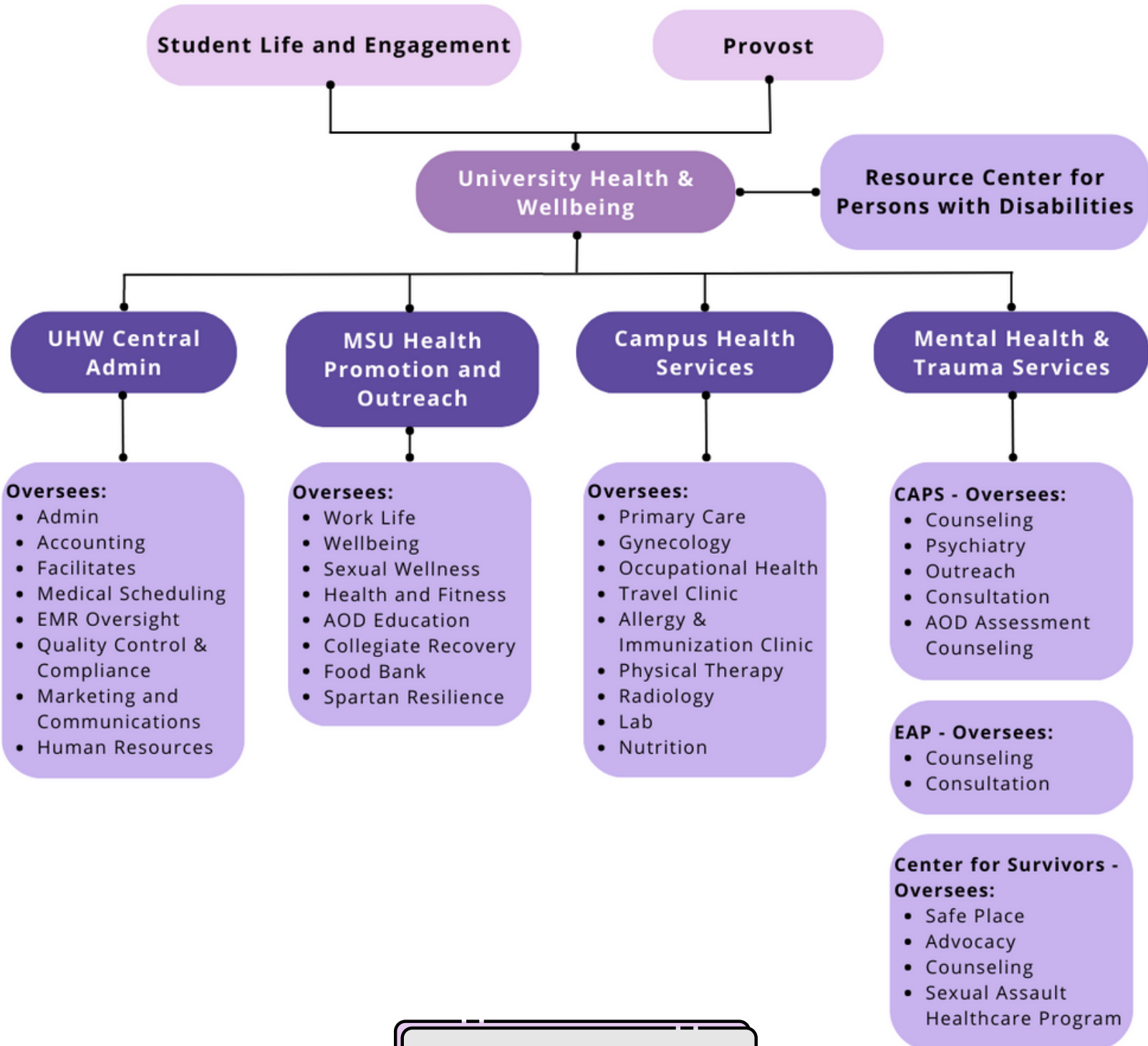
Honoring History

The creation of MSU Safe Place came about thanks to the diligent efforts of Former MSU First Lady, Joanne McPherson. In 1994, she became aware that MSU students and employees often had nowhere to go because the Lansing shelter was often full, and an off-campus program was difficult for many students to access. That year we became the first - and still the only - university-based shelter where students, staff, faculty, their partners, and their minor-aged children can receive shelter or support services when experiencing abusive relationships or stalking. In 2022, we were able to expand our staffing and programs. To this day, our mission is to provide survivor-focused services to those in need, with a priority given to those who are MSU-affiliated.

We honor our past as we step forward into our 30th year of being an MSU program. MSU Safe Place staff continue to shift our goals accordingly to the changing climate of campus and needs of survivors. This may include expanding and adapting programs, shifting collaborative efforts, and adjusting how survivors access our services. But our mission and priorities will not change. We are excited to move forward as part of University Health and Wellbeing, and as a program of the Center for Survivors. This new alignment of comprehensive services will improve access for survivors and expand collaboration between units that support a wide range of safety, health and wellbeing needs on campus.

Reorganization

Check out the University Health and Wellbeing reorganization flow chart. Safe Place is joining the Center for Survivors to provide comprehensive services to survivors of interpersonal violence.



safeplace.msu.edu

Program Updates

1) Crisis Chat

- Crisis Chat services became available at the end of October 2022
- In April 2023, services expanded from 2 hours each day to 10 hours each day, Monday - Friday.
- To access Crisis Chat, visit our website, <https://safeplace.msu.edu>

2) Expanding and updating program space

- Safe Place has reorganized and expanded space for increased programming and services, including improvements to office areas, shelter units and storage spaces.
- We have been working on including culturally and identity-diverse artwork and inclusive messaging in program spaces.

3) Hybrid services

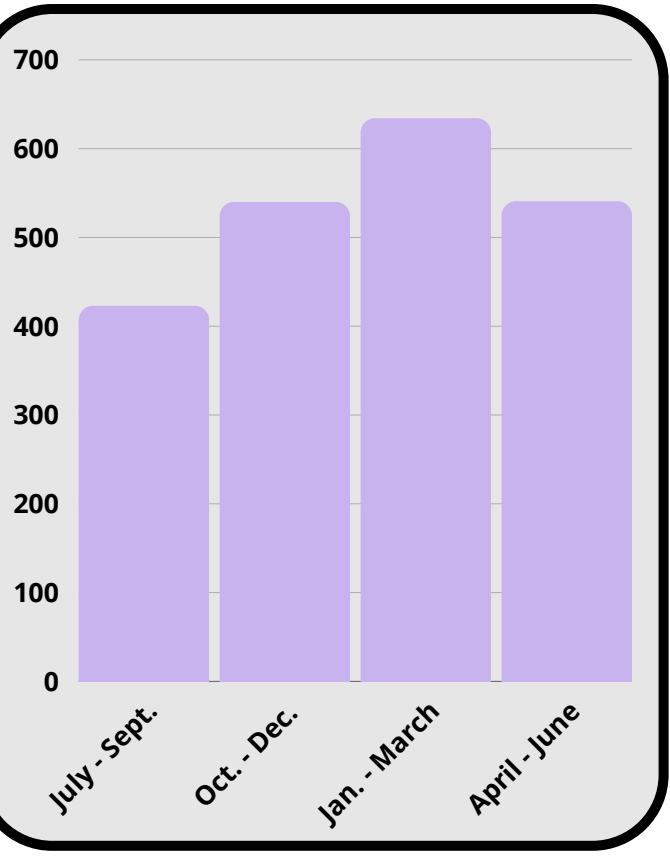
- In June 2023, Safe Place finalized their conference room update, which provides the ability to offer hybrid services to survivors in a support group setting with both in-person and remote options.
- This space also offers options for supporting survivors in virtual hearings and other meetings and allows for the provision of virtual outreach and training sessions.

Volunteer Staff Data

Thanks to MSU Safe Place hiring a full time Volunteer Coordinator in December 2021, MSU Safe Place has been able to double the number of volunteer positions available. Utilizing more volunteers and interns not only improves and expands service delivery to shelter and non-shelter clients by increasing staffing capacity, it also creates career development opportunities for MSU students, and increases education about supporting survivors for future professional leaders.

Volunteers and Interns Hours at Safe Place

Number of Volunteers and Interns



| Time Period | # Volunteers | # Interns | Total |
|--------------------|--------------|-----------|-------|
| July - September | 3 | 3 | 6 |
| October - December | 6 | 2 | 8 |
| January - March | 13 | 2 | 15 |
| April - June | 14 | 3 | 17 |

Volunteers & Interns

Safe Place volunteers and interns shared the following about their experience this year:

"Everyone is so supportive and you never feel like you're left to do things on your own - especially if you're not comfortable. Overall a very inclusive environment and I am always learning."

"I loved the opportunity to work with all of the staff and help to support their clients. I feel like I learned a lot when I worked with staff and had the chance to observe what they do."

Volunteers and interns provided support in a number ways:

- Staffed safe spaces for support during educational programming or other events
- Transported shelter and non-residential clients
- Helped screen clients for counseling or support groups
- Assisted with facilities management
- Helped stock and organize offices, shelter and program areas
- Picked up and helped sort donations
- Covered crisis chat shifts
- Facilitated support groups
- Provided counseling services

Services Provided



MSU Safe Place provides free and confidential services to MSU students, staff, faculty, their partners, and their minor-aged children. Services are offered to the Greater Lansing community when staffing and shelter availability allows.

Advocacy

Counseling

Shelter

Crisis Support

Support Groups

Parenting Support

Expert Witness Testimony

Community Support

Resource Fairs and Special Events

safeplace.msu.edu

Client-Driven Services

Advocacy

Advocacy interventions are specifically tailored to meet each survivor's needs, to help them navigate systems and feel supported. Examples include safety planning; referrals; support at court or during meetings with the Office for Institutional Equity (OIE), police or prosecutors; assistance accessing documents and completing applications; providing emotional support and validation; fostering relationships so survivors do not need to face ongoing issues alone; providing validation and support; and reviewing options.

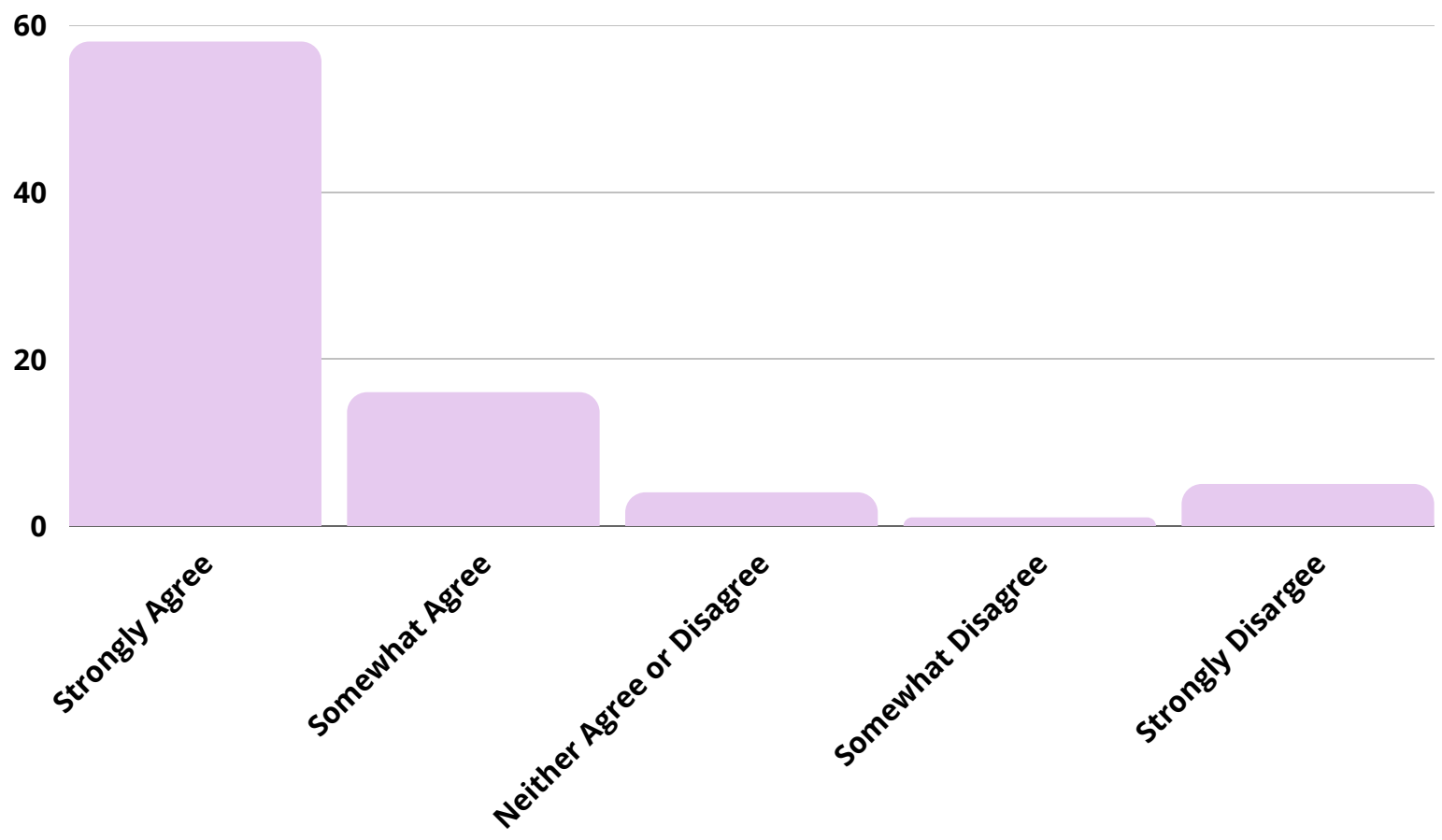
**109
advocacy
clients
served**

**1,022 hours
providing
services**

Outcomes

Advocacy

Because of support from Safe Place I have an increased knowledge of my options



Clinical Services

Counseling

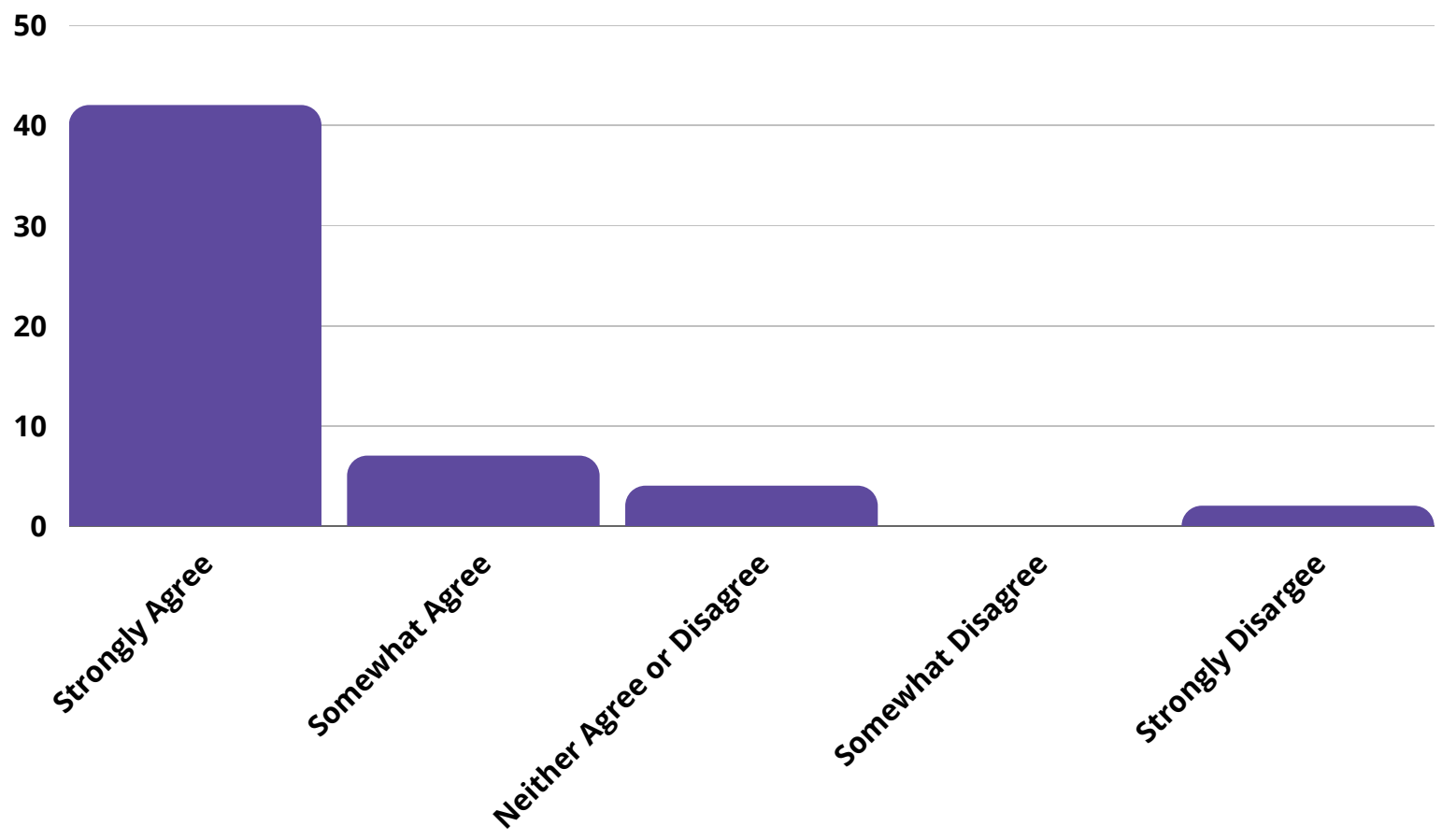
Our staff offers trauma-informed and evidence-based therapy that centers the survivor and their healing process. Therapy services are provided by our licensed therapist or graduate students in the MSU Master of Social Work program. In addition, safety, suicide, and mental health needs assessments are completed as appropriate.

49
counseling
clients
served

Outcomes

Counseling

Therapy has been helpful for me



Safe Refuge

Shelter

MSU Safe Place offers temporary shelter to students, staff, faculty, partners of affiliated individuals, and community members (when staffing and capacity allow). Shelter is provided to survivors of any gender identity who are feeling unsafe due to relationship violence. Shelter can also be provided to survivors with minor aged children, and those with assistance animals.

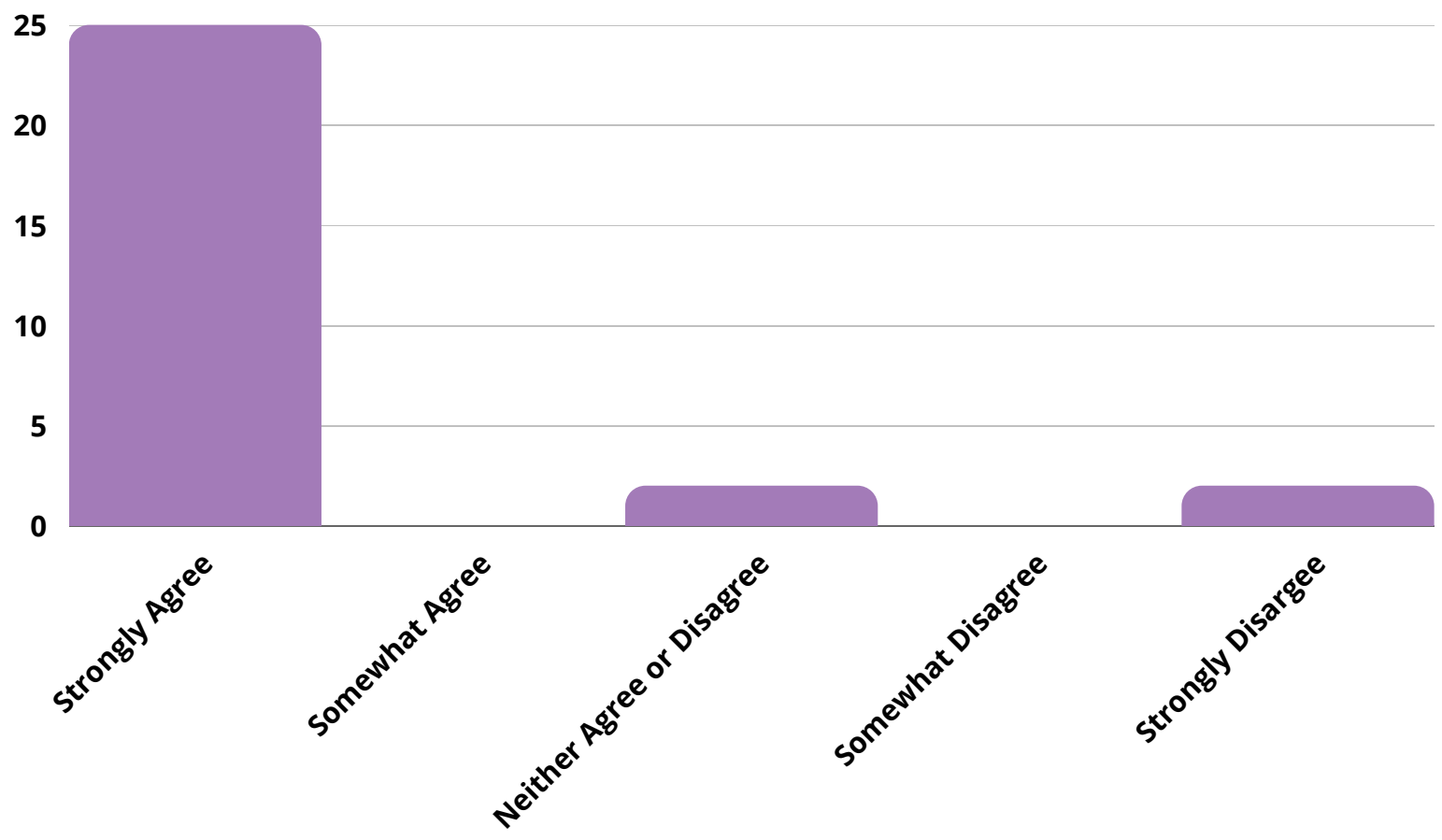
Shelter provided to 38 clients. Of those clients, 24 were adults and 14 were children.

2,679 total shelter nights

Outcomes

Shelter

I felt safe staying in shelter



Support Provided

Crisis Support

Crisis intervention is provided to shelter, counseling, support group, and advocacy clients, as well as to survivors who contact us via phone, Crisis Chat, or email. Crisis intervention is also provided during outreach events along with safe space support.

Support Groups

Since July 2022 four support groups have been offered: one for any survivor looking to begin their healing journey in person; an art therapy group; a student-focused group; and a virtual support group open to any survivor. In the beginning of 2023 the art therapy support group and student-focused support group ended, and the virtual group began. Since May of 2023 the virtual support group has moved to an in-person setting. As of fall 2023, three support groups are available to survivors.

21 people
have been
served in a
support
group setting

Support Provided

Group Descriptions

Reclaiming Power: A Healing Journey

This in-person group is open to all survivors of relationship violence. It aims to explore learning about survivor experiences and navigating healing through self-care. This is offered twice weekly.

Virtual Support Group

This relationship violence support group aimed to navigate healing from a virtual setting, accommodating survivor accessibility.

Art Therapy Group

This group facilitated survivor healing through art and expression.

Addressing Family & Legal Needs

Parenting Support

Survivors of relationship violence with children often experience their ex-partners perpetrating post-separation abuse and domestic violence by proxy, which creates additional stress, anxiety, trauma, and health and safety issues for themselves and their children. Individual support is provided as needed to non-offending parents.

Expert Witness

Testimony

Expert witness testimony is available upon request. The goal is to educate those who are trier of facts (a judge, jury, or Friend of the Court referee) so they are more knowledgeable about perpetrator tactics, victimization responses, and the risk of harm to others when making decisions about cases that involve domestic violence, stalking, or sexual assault.

Outreach

Community Liaison

MSU Safe Place has established a liaison relationship with the Gender and Sexuality Campus Center, the hub of LGBTQIA2S+ life at MSU. Starting in October 2022, MSU Safe Place staff began acting as a liaison to the GSCC weekly to connect with survivors and co-survivors, share information about services and events, and build relationships.

General Presentations

Community education is provided to help campus and community members and service providers learn how to recognize relationship violence and stalking, provide supportive interventions to survivors, hold abusers accountable, initiate practices and policies that improve systemic responses, and refer to our program or other resources when needed. Educational programs and trainings can be offered in person or virtually, and are tailored to meet the needs of each individual group. These programs occur by request, or when MSU Safe Place and community partners identify training gaps or problematic systemic responses that could be improved with educational initiatives.

Impact

This is what clients shared about their experiences with Safe Place:

"All [staff] are fully trained on the field and are able to understand even light level of abuse. Without Safe Place help I am sure I could not have survived, sometimes [it is] easy to give up. But they make you feel seen and understood"

"Safe Place has saved me in so many ways, helped me survive what happened to me and supported me to push through to continue school as well as gave me the courage to reach out for help from the people around me."

"I appreciate being able to stay at the shelter, especially until I was able to find a new place. It also helped out financially."

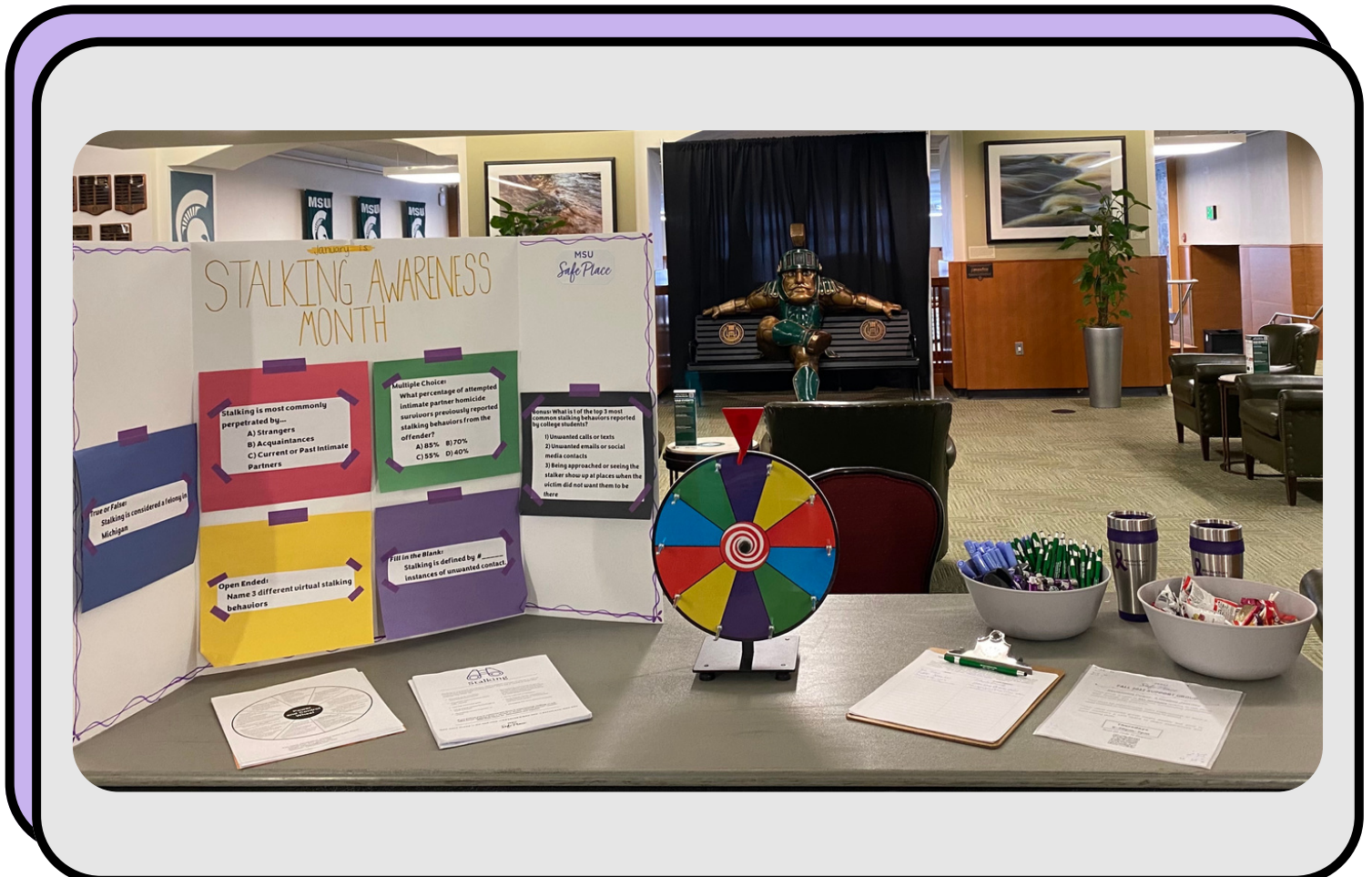
"Therapy has helped me in so many ways. The support has been consistent when I've needed it the most. It's been a great resource for me! I can't thank my counselor enough!"

Community Presence

Resource Fairs and

Special Events

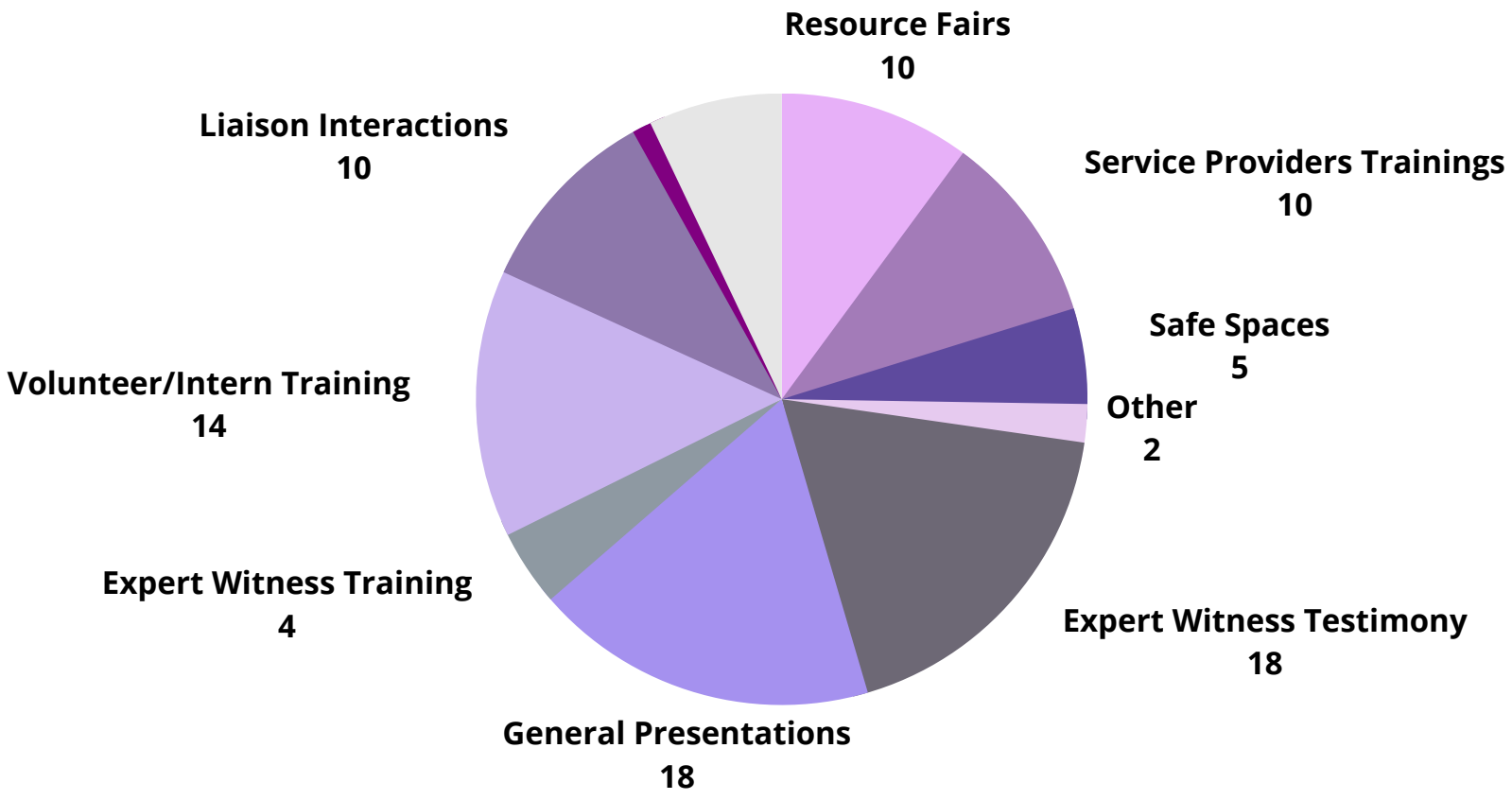
Staffing outreach events provide opportunities to connect campus and community members with MSU Safe Place and other community resources.



Impact

MSU Safe Place participated in 99 outreach events and connected with 12,744 participants.

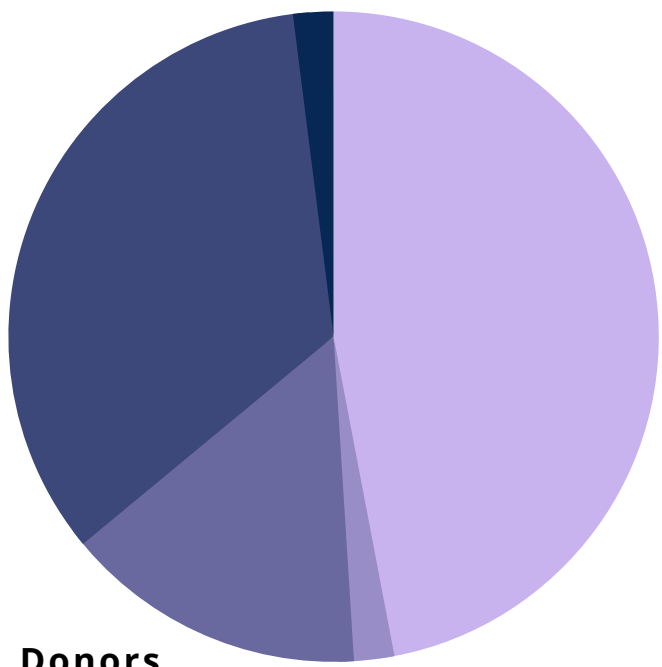
Outreach Overview



Financial Support

MSU Safe Place is extremely appreciative for all of the individuals and groups who donate to us, both financially and in-kind. We also appreciate support from local, state and federal funding sources. Currently, MSU Safe Place receives funding from the City of East Lansing, Ingham County, and Victims of Crime Act (VOCA), which is overseen by the Michigan Department of Health and Human Services (MDHHS). If you want to learn more about our program, or how to get more involved in supporting Safe Place, contact us at noabuse@msu.edu or go to safeplace.msu.edu.

Endowment Interest
2%



Michigan State University
47%

Victims of Crime Act (VOCA) Grant
34%

Donors
15%

Local Grants
2%

safeplace.msu.edu

Collaboration

MSU Safe Place provides volunteer and intern training three times a year, collaborating with two other domestic violence programs in the Lansing area: EVE and the Capital Area Response Effort (CARE).

Staff also take part in coordinated community response efforts, including MSU's Violence Free Communities (VFC), the Capital Area Domestic and Sexual Violence Coordinating Council (CADSVCC), MSU Sexual Assault Response Team (SART), the Capital Region Housing Collaborative (CRHC), the reproductive rights group on campus (SR3-CAN), WILD planning meetings, and other campus and community groups. In addition, MSU Safe Place collaborates frequently with the Center for Survivors; Prevention, Outreach and Education (POE); Residence Education and Housing Services (REHS), and other campus programs.

Future Growth & Development

We anticipate future growth as we continue to build our new connection with the Center for Survivors in the coming year. We look forward to what is yet to come!

We are working to evaluate support group service needs for BIPOC survivors, those identifying as male, and LGBTQIA2S+ survivors. Additionally, plans are in the works for creating non-clinical, informal, fun gatherings for our survivors to connect outside of current programming.

Our volunteers and interns have always assisted in providing transportation for clients, support for court and other appointments, and other short-term advocacy. In 2023-2024, MSU Safe Place will expand our volunteer and intern training and program to include more expansive advocacy provision. We look forward to this new opportunity for our student learners and the expanded staffing capacity that it will provide.